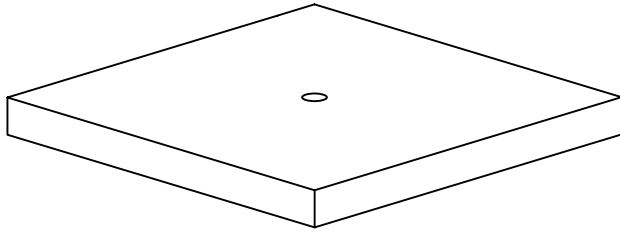
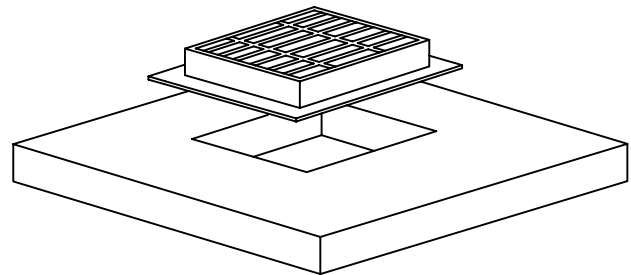


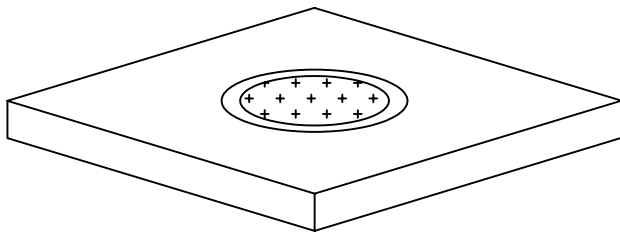
STANDARD CATCH BASIN LIDS



SOLID LID



LID W/ HOLE
AS REQUIRED



CAST-IN
RING & COVER
OR
FRAME & GRATE

*MINIMUM 4000 psi CONCRETE.

- *STANDARD LIDS ARE 6" THICK.
- *CONCRETE TO BE 4000 psi.
- *REINFORCEMENT TO BE #5 REBAR @ 6" OCEW W/ 1-1/2" COVER.
- *RECESSED STEEL HOOKS FOR LIFTING.
- *CUSTOM SIZES AVAILABLE UPON REQUEST.